

Light efficiency:

52 Lumen/Watt

Light quality:

CRI: 91.7

Color temperature:

4096 K

Output: 16819 lm

Peak: 126270 cd

Power: 325 W

PF: 1.0

No photo

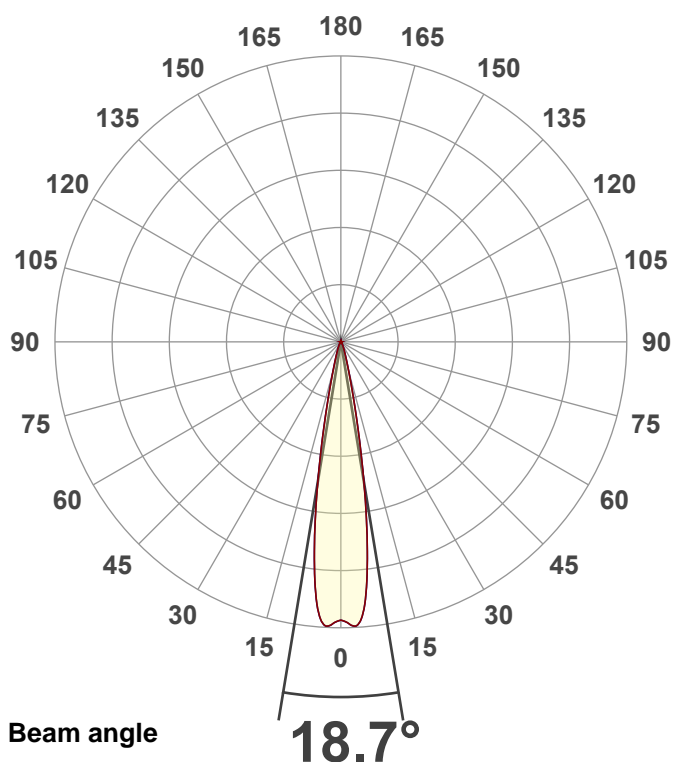
Product name:

40 Hex Panel IP (Full On,4000K)

Item number:

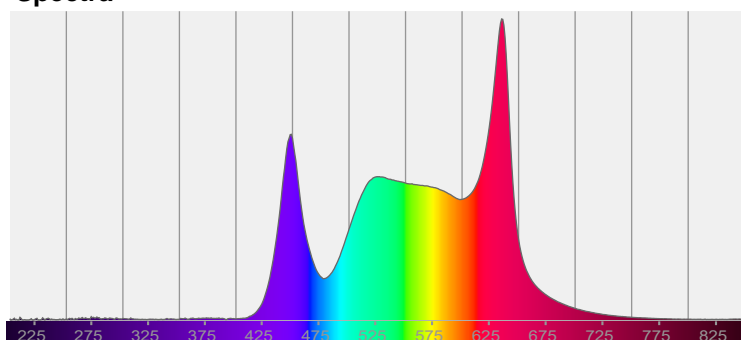
Date and time:

10/9/2025 2:21:30 PM



CIE 1931
x: 0.376
y: 0.373

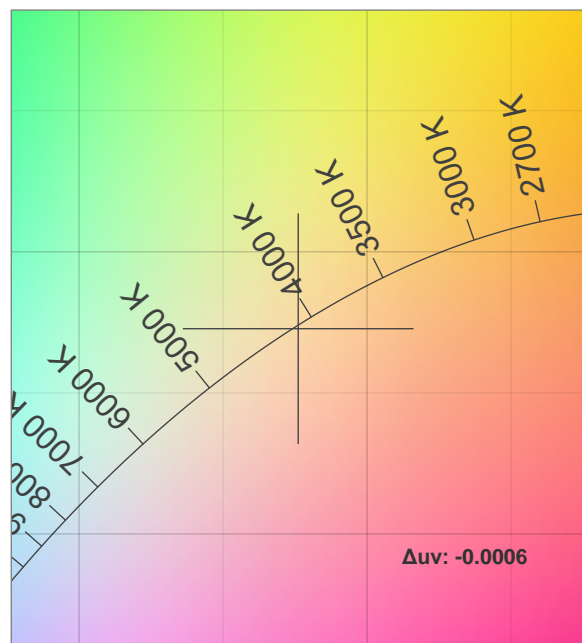
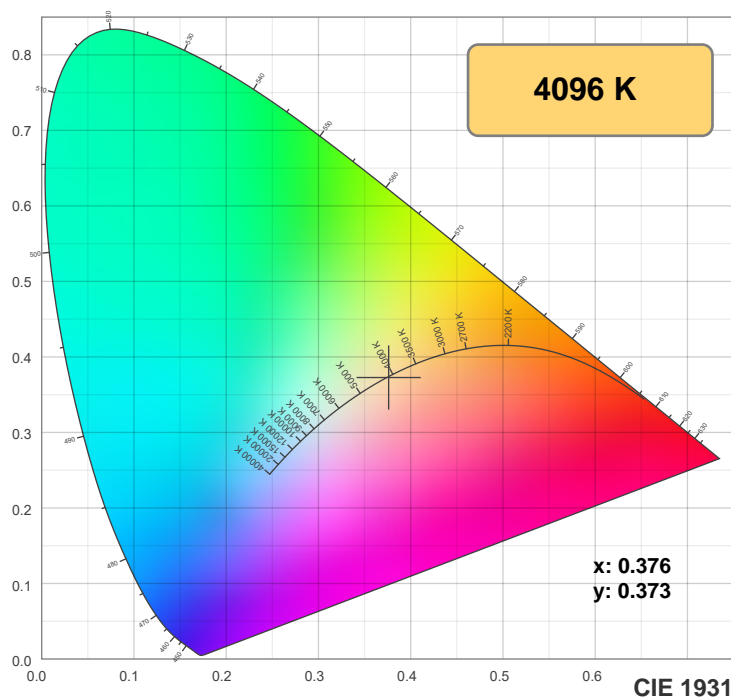
Spectra



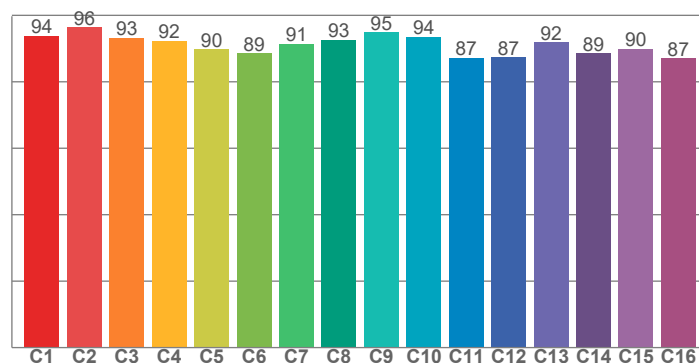
Power

Voltage: 116 V
Current: 2.80 A
Frequency: 0 Hz

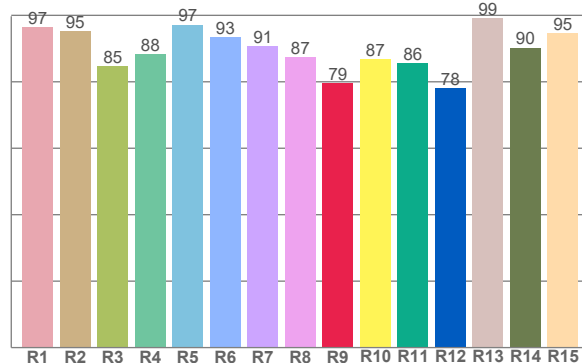
Color details



TM-30: 91.3



CRI: 91.7 (R1-R8)



CRI R values, only R1-R8 are used to calculate final CRI value

R1	R2	R3	R4	R5	R6	R7	R8	R9	R10	R11	R12	R13	R14	R15
96.5	95.3	84.7	88.2	97.2	93.5	90.7	87.5	79.5	86.9	85.5	78.0	99.1	90.3	94.7

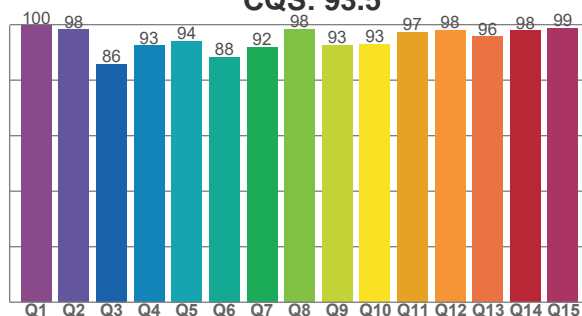
TM30 C values, 16 binned values out of total of 99 C values

C1	C2	C3	C4	C5	C6	C7	C8	C9	C10	C11	C12	C13	C14	C15	C16
93.9	96.4	93.2	92.4	89.7	88.5	91.4	92.6	94.8	93.6	87.2	87.3	91.9	88.5	89.9	87.1

CQS Q values

Q1	Q2	Q3	Q4	Q5	Q6	Q7	Q8	Q9	Q10	Q11	Q12	Q13	Q14	Q15
99.6	98.2	85.8	92.5	94.1	88.4	91.9	98.5	92.6	93.0	97.4	98.0	95.7	97.8	98.8

CQS: 93.5



Color parameters

Color temperature	Color rendering index	Red component	Color fidelity	Color gamut	Color quality scale	Color coordinate cie 1931	Color coordinate cie 1931	Color coordinate	Color coordinate	Color deviation from black body
CCT	CRI	CRI R9	TM30 Rf	TM30 Rg	CQS	x	y	u	v	Δuv
4096 K	91.7	79.5	91.3	106.2	93.5	0.376	0.373	0.224	0.333	-0.0006

TM-30 details

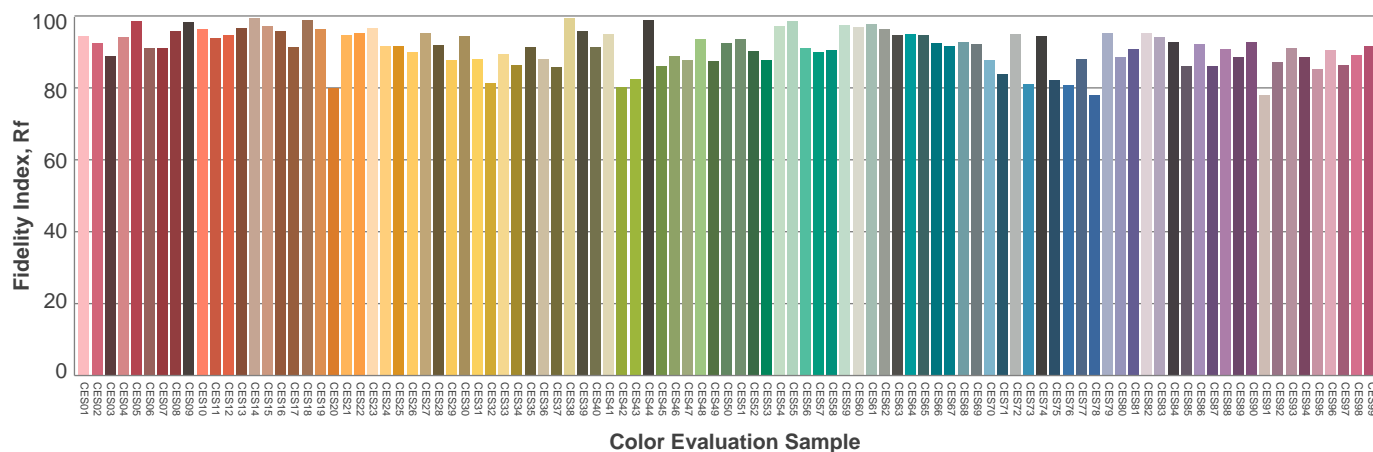
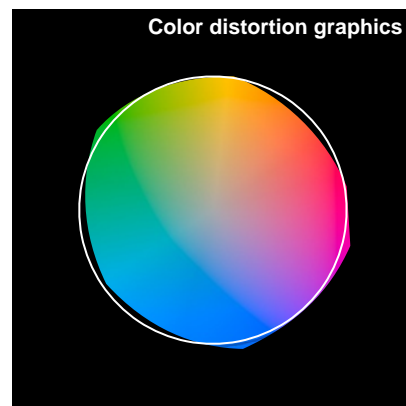
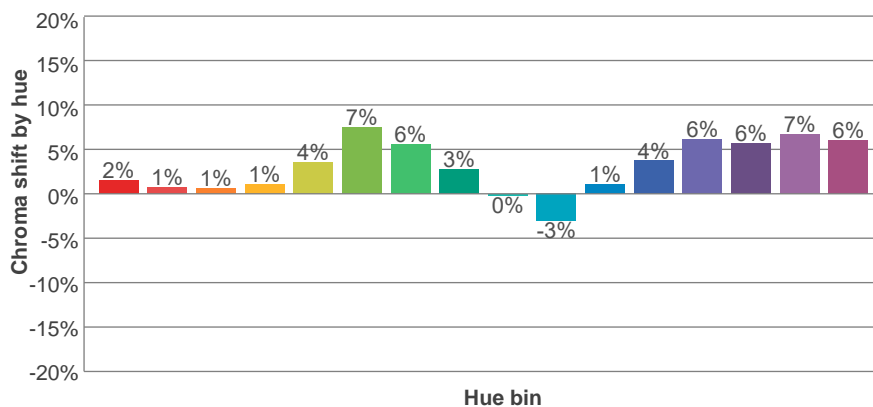
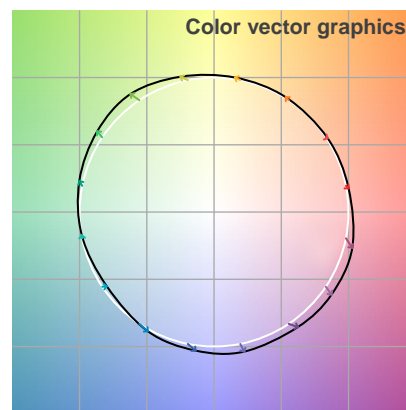
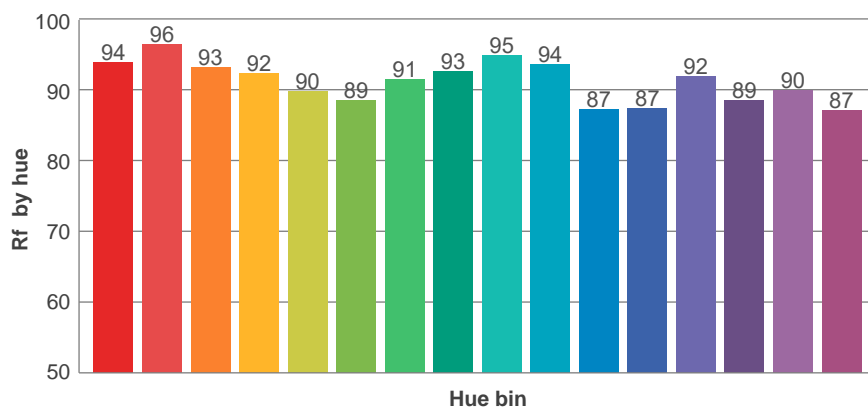
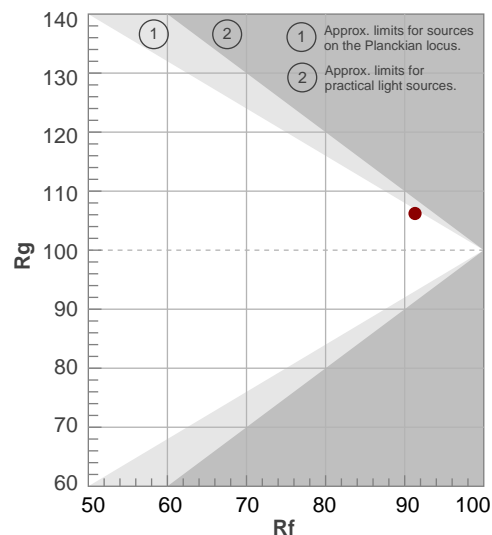
Rf 91.3

Fidelity index Rf

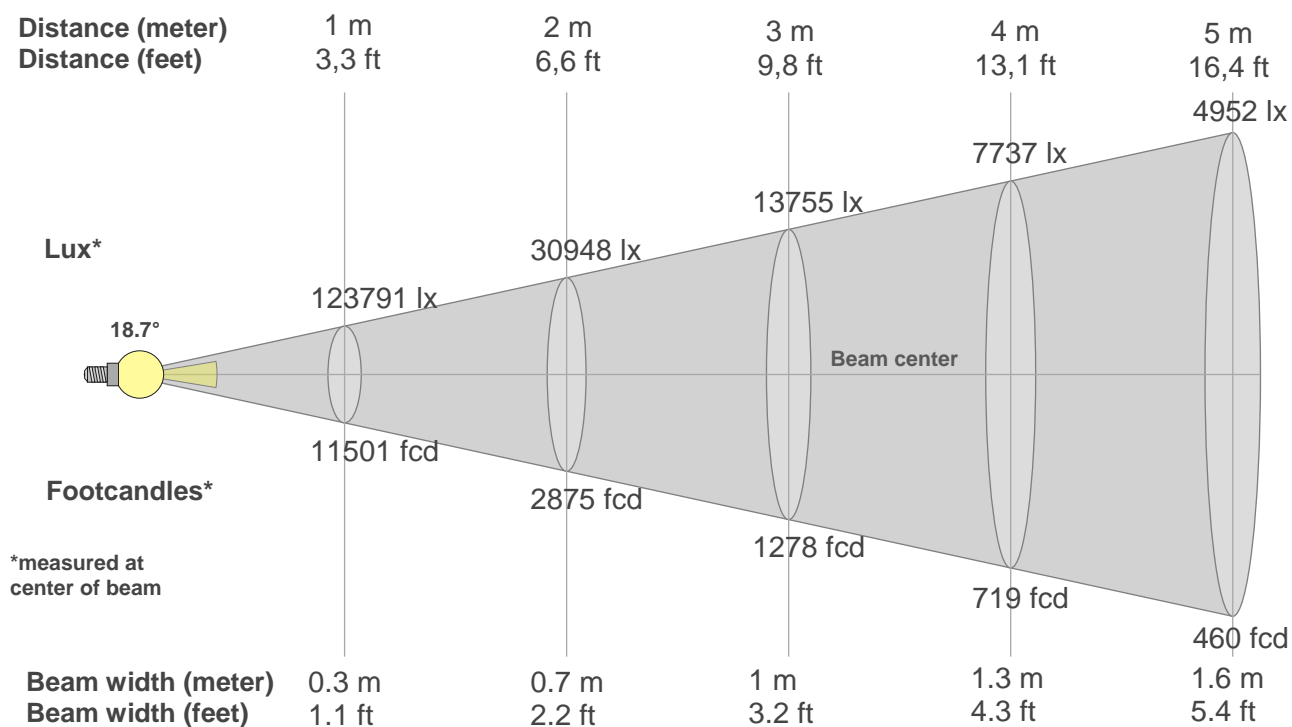
Rg 106.2

Gamut index Rg

Hue Bin	R _f	Shifts (%)	
		Chroma	Hue
1	94	2%	-2%
2	96	1%	-1%
3	93	1%	3%
4	92	1%	4%
5	90	4%	5%
6	89	7%	3%
7	91	6%	-2%
8	93	3%	-3%
9	95	0%	-2%
10	94	-3%	2%
11	87	1%	8%
12	87	4%	7%
13	92	6%	2%
14	89	6%	4%
15	90	7%	-3%
16	87	6%	-6%



Beam details



Beam intensities from 1-20m

1m	2m	3m	4m	5m	6m	7m	8m	9m	10m	11m	12m	13m	14m	15m	16m	17m	18m	19m	20m
3.3ft	6.6ft	9.8ft	13.1ft	16.4ft	19.7ft	23ft	26.2ft	29.5ft	32.8ft	36.1ft	39.4ft	42.7ft	45.9ft	49.2ft	52.5ft	55.8ft	59.1ft	62.3ft	65.6ft
123791lx	30948lx	13755lx	7737lx	4952lx	3439lx	2526lx	1934lx	1528lx	1238lx	1023lx	860lx	732lx	632lx	550lx	484lx	428lx	382lx	343lx	309lx
11500.5 fcd	2875.1 fcd	1277.8 fcd	718.8 fcd	460 fcd	319.5 fcd	234.7 fcd	179.7 fcd	142 fcd	115 fcd	95 fcd	79.9 fcd	68.1 fcd	58.7 fcd	51.1 fcd	44.9 fcd	39.8 fcd	35.5 fcd	31.9 fcd	28.8 fcd

Intensities in 0° c-plane

0°	1°	2°	3°	4°	5°	6°	7°	8°	9°	10°	11°	12°	13°	14°	15°	16°	17°	18°	19°
124k	124k	126k	126k	124k	118k	109k	96k	83k	68k	54k	41k	31k	23k	18k	13k	11k	9k	7k	6k
100%	101%	102%	102%	100%	96%	88%	78%	67%	55%	44%	33%	25%	19%	14%	11%	9%	7%	6%	5%

Intensities in 90° c-plane

0°	1°	2°	3°	4°	5°	6°	7°	8°	9°	10°	11°	12°	13°	14°	15°	16°	17°	18°	19°
124k	124k	126k	126k	124k	118k	109k	96k	83k	68k	54k	41k	31k	23k	18k	13k	11k	9k	7k	6k
100%	101%	102%	102%	100%	96%	88%	78%	67%	55%	44%	33%	25%	19%	14%	11%	9%	7%	6%	5%

Intensities in 180° c-plane

0°	1°	2°	3°	4°	5°	6°	7°	8°	9°	10°	11°	12°	13°	14°	15°	16°	17°	18°	19°
124k	124k	126k	126k	124k	118k	109k	96k	83k	68k	54k	41k	31k	23k	18k	13k	11k	9k	7k	6k
100%	101%	102%	102%	100%	96%	88%	78%	67%	55%	44%	33%	25%	19%	14%	11%	9%	7%	6%	5%

Intensities in 270° c-plane

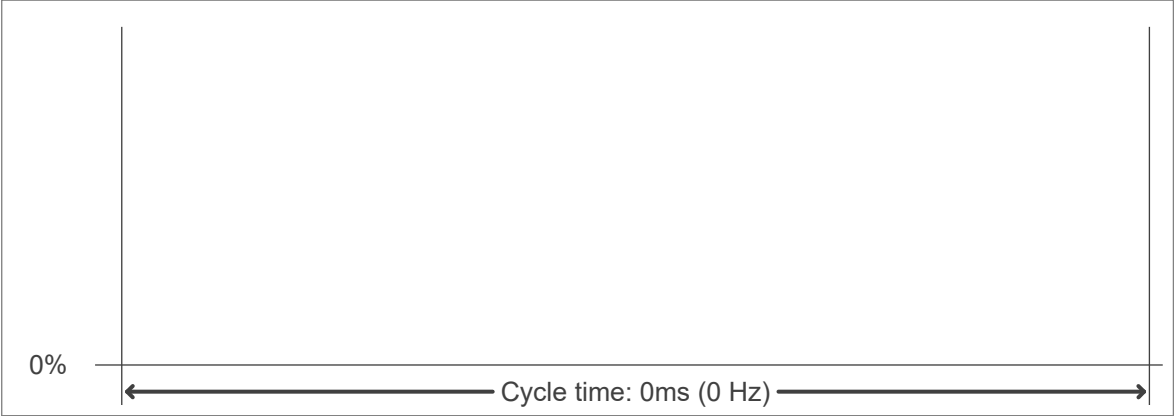
0°	1°	2°	3°	4°	5°	6°	7°	8°	9°	10°	11°	12°	13°	14°	15°	16°	17°	18°	19°
124k	124k	126k	126k	124k	118k	109k	96k	83k	68k	54k	41k	31k	23k	18k	13k	11k	9k	7k	6k
100%	101%	102%	102%	100%	96%	88%	78%	67%	55%	44%	33%	25%	19%	14%	11%	9%	7%	6%	5%

Beam angle 50%	Field angle 10%	Cutoff angle 2,5%	Intensity ratio in 120° cone	Intensity ratio in 90° cone
18.7°	30.5°	46.7°	96.6%	93.7%

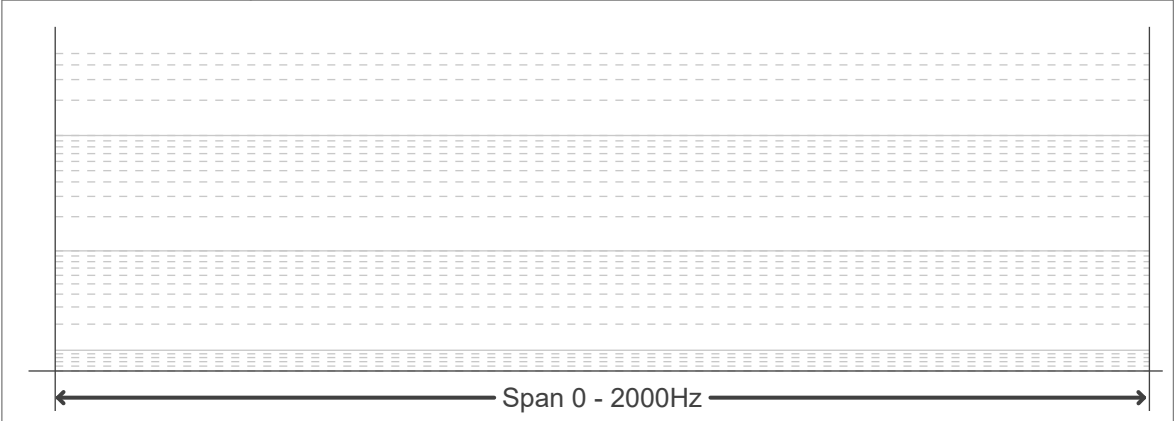
Flicker curve (complete sampled flicker signal)



Flicker frame (frame of one flicker period)



Flicker FFT (frequency scope of flicker curve)



Flicker results:

Flicker frequency:		n/a Hz	
Flicker index:	n/a	JA8/10 40Hz	n/a %
Flicker percentage:	n/a %	JA8/10 90Hz	n/a %
SVM: (Visual flicker)	n/a	JA8/10 200Hz	n/a %
PstLM	n/a	JA8/10 400Hz	n/a %
Mp	n/a	JA8/10 1000Hz	n/a %

Flicker conditions:

Sample rate:	n/a samples/second
--------------	--------------------